









Production COVID-19 Controls	No. 1	 uk greetings
	Authorised By: Chris Shaw (Head of Safety & Sustainability)	
Issue/Review Date: 11/05/20 Next Review Date: Ongoing	Page Number: 1 of 2	


Description of Work:	All Personnel Working on Site during COVID-19 lockdown
Working within UK manufacturing during heightened lockdown periods (COVID-19). Standard PPE requirements remain unchanged for current operations on site. No additional PPE is required above standard.	Potential Hazards: Cross-infection/contamination – COVID-19. <u>As per Government guidelines, please ensure that you follow the social-distancing and points covered below.</u>

Personal Protective Equipment (PPE) Required (Check the box for required PPE):

 Gloves	 Face Masks	 Eye Protection	 Welding Mask	 Appropriate Footwear	 Hearing Protection	 Protective Clothing
<input type="checkbox"/>	<input type="checkbox"/>	<input type="checkbox"/>	<input type="checkbox"/>	<input type="checkbox"/>	<input type="checkbox"/>	<input type="checkbox"/>

Safe Work Procedure Checklist:

- 1. Before Travelling to Site:**
 - **Do not leave your home if you have coronavirus symptoms:**
 - a high temperature – this means you feel hot to touch on your chest or back (you do not need to measure your temperature)
 - a new, continuous cough – this means coughing a lot for more than an hour, or 3 or more coughing episodes in 24 hours (if you usually have a cough, it may be worse than usual)
 - To protect others, do not go to places like a GP surgery, pharmacy or hospital. Stay at home.
 - Contact NHS online <https://111.nhs.uk/covid-19/> to check and obtain further advice.
 - Contact your Manager / Supervisor by telephone to advise.
- 2. Travelling to Site:**
 - Unless you live in the same household do not car share as this does not maintain social distancing.
 - If you walk to site with a colleague, maintain at least 2m distance between yourselves.
- 3. Arrival to Site:**
 - Where required shifts shall be staggered to reduce the numbers of personnel arriving / leaving site at any one time. But it is understandable that there will be others arriving at the same time. Like arriving at a supermarket, you must queue in an orderly manner, maintaining at least 2m distance between yourselves. Please arrive earlier to ensure that you have plenty of time to clock in on time. However, if you are late because you were maintaining the correct distances, explain this to your Manager immediately.
- 4. Welfare on Site:**
 - **SMOKING**
It is understandable that social distancing is impossible within the on-site smoking shelters for large numbers. Therefore, smoking restrictions shall be relaxed during this period. Personnel are permitted to smoke outside of this sheltered area, but only within the immediate vicinity of the smoking shelter, allowing at least 2m between each other. Please wait until the bin is free before stubbing out and discarding your cigarette. Do not leave waste on the floor.
 - **EATING / DRINKING**
During the period of self-isolation, the canteen kitchen facilities shall be closed. Water fountains shall be available for refilling purposes. Vending machines for drinks shall be maintained. During this period of self-isolation, we apologise for the lack of the kitchen, but please ensure that you bring your own food/drink, suitable container and cutlery. This is to prevent cross-infection between our colleagues.

Production COVID-19 Controls	No. 1	 uk greetings
	Authorised By: Chris Shaw (Head of Safety & Sustainability)	
Issue/Review Date: 11/05/20 Next Review Date: Ongoing	Page Number: 2 of 2	

4. Welfare on Site (continued):

- EATING / DRINKING continued..
Sitting on the same table as your colleagues is unfortunately prohibited during these times, in order to maintain social distancing. Tables not to be used shall be marked on site, and where possible separated. We encourage personnel to eat alone in their cars, when the canteen has reached maximum occupancy. Management shall do as much as possible to lessen the demand during lunch and break times. We appreciate that it is difficult not being able to sit next to your colleagues over lunch.
- TOILETS
Toilet areas shall be fully stocked with handwashing soap. If the dispenser is running low, please advise your Manager. DO NOT WAIT UNTIL IT HAS RUN OUT TO TELL SOMEONE. The on-site cleaning team shall maintain these units. Posters depicting correct handwashing techniques are posted within the toilet areas.

5. Hygiene on Site

- Avoid touching your eyes, nose or mouth if your hands are not clean.
- Wash your hands as soon as you arrive on site. After using the toilet and before eating and drinking.
- Wash your hands when you arrive home.
- Cover your mouth and nose with a tissue or your sleeve (not your hands) when you cough or sneeze
- Put used tissues in the bin immediately and wash your hands afterwards
- Together with social distancing, this is one of the up most important things we ask you to do. You must take at least 20 seconds washing your hands with soap and water.

Note: The cleaning team shall focus on the cleaning of non-operational areas, such as toilets, entry/exit points, door handles, light switches, clocking in machines, canteen tables, microwaves, and water fountains etc.

6. Working on Site

- Maintain social-distancing at all times. For instance, if someone is already in the area where you need to go, you should wait for them to finish. If this is not realistic due to the nature of the job, and closer proximity is necessary on an ongoing basis, then a method of shielding shall be required. For instance, barriers will be installed where a 2m distance cannot be achieved. For example, take off end of the guillotine.
- Also a safe method for the tradesperson and machine assistant to maintain social distancing is required, through establishing zones. For example if the tradesperson or another is required to enter a particular zone, then the personnel in close proximity must exit their zones, thus achieving 2m distance at all times.
- Machine centres, computer workstations, and forklift trucks shall be provided with sanitiser spray and blue roll tissue. This must be used for cleaning down controls, seats, keyboard/mouse, pallet wheels, and any other shared equipment.
- Bin lids are to be removed in order to reduce touch points.

7. Emergency Procedures

- You should maintain the same process during a fire evacuation as normal, with one exception: When assembling outside, maintain at least 2m distance between yourselves. We appreciate that you will need to extend beyond the normal assembly point allocated to your team. However as there are less people on site, this is perfectly acceptable. Government guidelines appreciate that this is not always possible in an emergency.

Name of operative (please print)	Clock / I.D. no.
.....
I have read this work instruction and understand the contents of the supporting risk assessment. I agree to comply with the contents and detail contained therein.	
Signed	Date

UK GREETINGS LTD - GENERAL RISK ASSESSMENT FORM

Date:	13th May 2020	Assessed By:	Chris Shaw (Head of Safety & Sustainability)
Location:	Distribution / Warehousing Centres	Assessment No.:	COVID-19 (Special Risk Assessment)
Task/Premises:	Production Operative (COVID-19)	Review Date:	Constantly under review as new information emerges

ACTIVITY	HAZARD	PERSONS IN DANGER	Severity	Risk	Risk Rate	MEASURES TO FOLLOW / COMMENTS
General Social Distancing	COVID-19 Cross Infection	Production Operative	4	2	8	<p>Social distancing is to be exercised by the operative, politely asking colleagues to maintain a 2m distance.</p> <p>Social distancing shall be maintained during emergency procedures as well, e.g. fire alarm evacuation. Management to promote compliance.</p> <p>Shifts to be balanced to reduce the number of people in one area. Where required, shifts to finish 15 minutes early and 15 minutes late to create 30 minutes between shifts, to reduce volumes of personnel on site at any one time.</p> <p>Canteen should be adjusted to ensure the 2m distancing is applied. Tape off tables out of use or relocate as required.</p> <p>Generally the positions when operating a machine dictate sufficient distance to comply with social distancing requirements, with the following exceptions: > Guillotine operator and assistant due to the footprint of the machine. A method of providing a barrier between the operator and assistant at the take off end of the machine is required, since the distance is less than 2m. Also the stacking down pallets need moving as they result in the assistant being too close to the operator. Assistant</p>
General Social Distancing	COVID-19 Cross Infection	Production Operative	4	2	8	<p>Site visits are limited to absolute essential only, for instance planned or preventative maintenance by contractors or M&E team, or drivers delivering stock. Social distancing should also apply, together with permittance of external contractors and drivers to utilise on site toilets for welfare and good hygiene purposes.</p>
General Surface Contact	COVID-19 Cross Infection	Production Operative	4	2	8	<p>Cleaning hands by using the hand sanitisers (where available) and/or hand soap within the toilet facilities. Frequently wash your hands with soap and water for at least 20 seconds, or use an alcohol-based hand rub with at least 60% alcohol. Follow the NHS handwashing techniques. Posters are posted on site in toilets.</p> <p>The Facilities cleaning team shall regularly top up the soap dispensers. The cleaning team also supports the cleaning of non-operational areas, such as toilets, entry/exit points, door handles, light switches, clocking in machines etc.</p> <p>Operatives should cover their mouth and nose with a tissue or their sleeve (not your hands) when they cough or sneeze. Put used tissues in the bin straight away. Immediately wash hands thoroughly afterwards.</p> <p>Performance rates to be relaxed to allow operatives to maintain good hygiene practice.</p> <p>Operatives should avoid touching their eyes, nose, or mouth with unwashed hands.</p> <p>Canteens kitchens to be closed until further notice. Operatives to bring their own food and use their own containers/cutlery etc, in order to risk cross-infection. Keep this in your own bag.</p> <p>Cleaning machines surfaces</p>
General Vulnerable Persons	COVID-19 Cross Infection	Production Operative	10	2	20	<p>Vulnerable employees / family members should be considered in accordance with the latest Government guidelines. If you are shielding you do not have to shield yourself, and coming to work is acceptable if social distancing and other measures are in force and effective.</p>
General Symptoms	Symptoms	Production Operative	4	4	16	<p>Symptoms those exhibiting symptoms should immediately contact their manager by telephone. They should self-isolate in accordance with the latest Government guidelines: > a high temperature – this means you feel hot to touch on your chest or back (you do not need to measure your temperature) > a new, continuous cough – this means coughing a lot for more than an hour, or 3 or more coughing episodes in 24 hours (if you usually have a cough, it may be worse than usual)</p>
General Commuting	Commuting	Production Operative	4	4	16	<p>Commuting / Site Access where possible do not utilise public transport unless it is absolutely essential. Do not car share during the period of lockdown. When entering site, maintain a 2m distance between employees.</p>

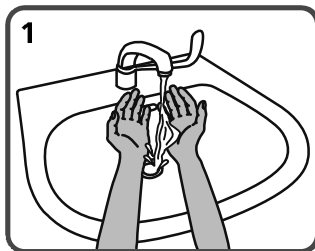
Categories (For Severity and Risk Scores given above):

Severity 1	Delay only	Risk 1	Very unlikely
Severity 2	Minor injury	Risk 2	Unlikely
Severity 4	Lost time injury / illness	Risk 4	May happen
Severity 6	Major injury	Risk 6	Likely
Severity 8	Permanent disability	Risk 8	Very likely
Severity 10	Death	Risk 10	Certain

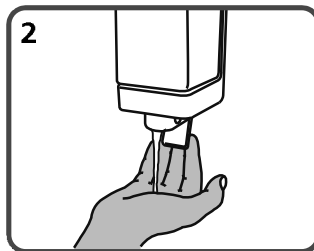


The higher this score the greater the injury outcome and likelihood of occurrence. Adherence to the 'measures to follow / comments' will adequately control the specified activities. (Scores: Below 25 = AMBER, Above 25 = RED).
 Items shown in *ITALIC* require further action.

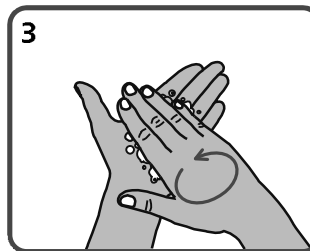
Hand-washing technique with soap and water



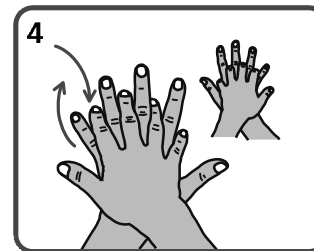
1
Wet hands with water



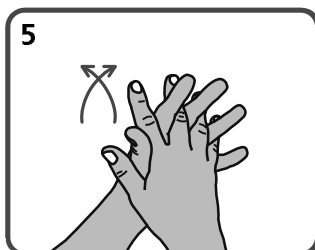
2
Apply enough soap to cover all hand surfaces



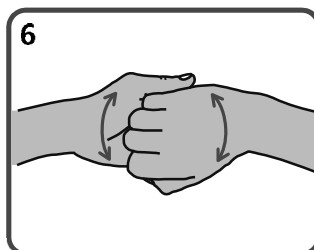
3
Rub hands palm to palm



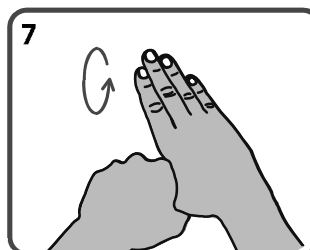
4
Rub back of each hand with palm of other hand with fingers interlaced



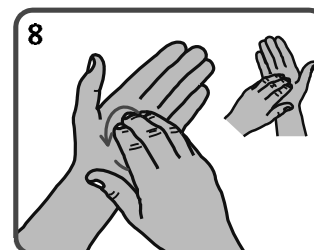
5
Rub palm to palm with fingers interlaced



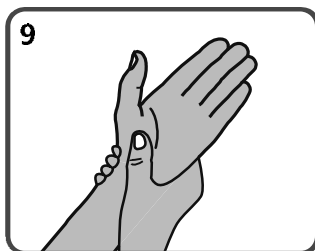
6
Rub with back of fingers to opposing palms with fingers interlocked



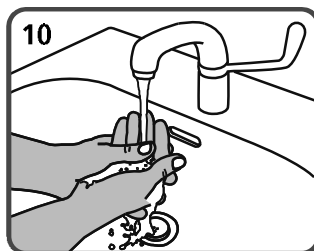
7
Rub each thumb clasped in opposite hand using a rotational movement



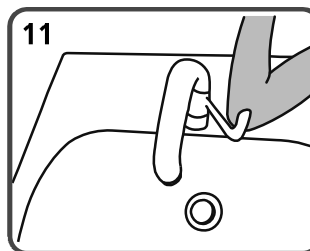
8
Rub tips of fingers in opposite palm in a circular motion



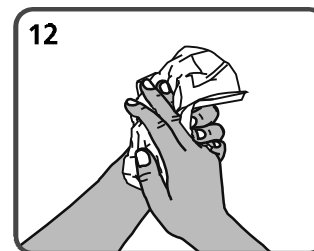
9
Rub each wrist with opposite hand



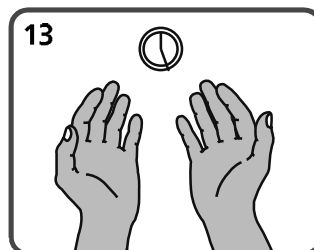
10
Rinse hands with water



11
Use elbow to turn off tap if required



12
Dry thoroughly with paper towels where available. If not, using a hand dryer is perfectly acceptable.



13
Hand washing should take 15-30 seconds no less. Remember we all need to work together to keep ourselves safe